

AIRFRAME:

AIRCRAFT TOTAL TIME: 2098

AIRCRAFT LANDINGS: 1181

2006 LEARJET 60

Serial Number: 305

Registration Number: TC-SHY

Price: Inquire

ENGINES:

		TSN	CSN
L	Pratt & Whitney 305A	2098	1181
R		2098	1181

APU:

	TSN
T-20G-10C3A	1521

HIGHLIGHTS:

- EASA compliant
- Engines on JSSI
- Low Hours
- Fresh 12 years inspection (Jetaviation Vienna)
- Airshow 400
- Increased Gross Weight
- Cabin Video System – with Two (2) DVD Players
- Iridium Phone System with Two (2) Wireless and One (1) Wired Handsets
- RVSM / RNP5 / RNP10 / MNPS
- FM Immunity
- 8.33 COM spacing

*Specifications and/or descriptions are provided as introductory information only and do not constitute representations or warranties. Verification of specifications remain the sole responsibility of purchaser. Aircraft is subject to prior sale, lease and/or removal from the market without prior notice. Specifications as of August 2019.



2006 LEARJET 60

Serial Number: 305

Registration Number: TC-SHY

Price: Inquire

AVIONICS:

- Four Liquid Crystal Flight Displays (EFIS) (Collins Proline 4)
- Dual Collins VHF COMM (VHF-422C with 8.33 Spacing)
- Collins Dual VOR/ILS Navigation Receivers (VIR-432 with FM Immunity)
- Collins Dual Mode S Transponders (TDR-94D)
- Dual Universal Flight Mgmt. Systems with GPS, PRNAV Compliant (UNS-1E)
- Dual Rockwell Automatic Direction Finder (ADF-462)
- Dual Distance Measuring Equipment (DME-442)
- Universal Cockpit Voice Recorder (CVR-120)
- Dual Collins Air Data System (ADC-850D)
- Integrated Flight Instrument System (IFIS)
- Autopilot
- Collins Weather Radar System (RTA-854)
- Dual Honeywell HF Comms (KTR953)
- Collins Radio Altimeter (ALT-4000)
- Collins TCAS II with Change 7.1 (TTR-4000)
- Honeywell MK-V EGWPS
- Artex ELT (C-406-2) with NAV interface
- SELCAL (JETCALL-5)
- L3 Comm Lighting Sensor (WX-1000)
- L3 Comm Flight Data Recorder (FA2100FDR)

*Specifications and/or descriptions are provided as introductory information only and do not constitute representations or warranties. Verification of specifications remain the sole responsibility of purchaser. Aircraft is subject to prior sale, lease and/or removal from the market without prior notice. Specifications as of August 2019.



2006 LEARJET 60

Serial Number: 305

Registration Number: TC-SHY

Price: Inquire

<p>INTERIOR:</p>	<ul style="list-style-type: none"> • (7) passenger fireblocked executive interior • Two (2) forward facing single seats • Three (3) place divan • Two (2) place conference group • The forward cabin features a center/galley • The aft lavatory seat is belted offering seating for one (1) • 10 Disk CD Changer, 15.1 inch (38 cm) Fwd and Aft Video Monitors • TIA Microwave Oven • Hot Liquid Container
<p>EXTERIOR:</p>	<ul style="list-style-type: none"> • Overall Black painted fuselage with several white stripes
<p>INSPECTION:</p>	<ul style="list-style-type: none"> • Phase A checks due at July 2020 • Phase B checks due at July 2021 • Phase C checks due at Jan 2022 • Phase D checks due at Feb 2022 • LDG due at Oct 2029 • 12 year Airframe checks due at Jul 2030

*Specifications and/or descriptions are provided as introductory information only and do not constitute representations or warranties. Verification of specifications remain the sole responsibility of purchaser. Aircraft is subject to prior sale, lease and/or removal from the market without prior notice. Specifications as of August 2019.



2006 LEARJET 60

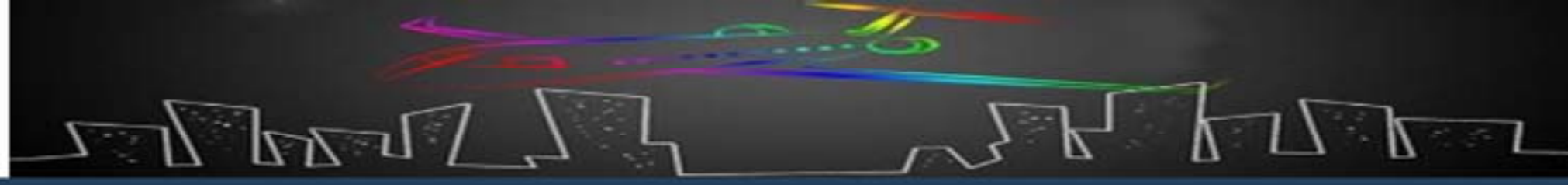
Serial Number: 305

Registration Number: TC-SHY

Price: Inquire

PHOTOS:





2006 LEARJET 60

Serial Number: 305

Registration Number: TC-SHY

Price: Inquire

PHOTOS:





2006 LEARJET 60

Serial Number: 305

Registration Number: TC-SHY

Price: Inquire

PHOTOS:





2006 LEARJET 60

Serial Number: 305

Registration Number: TC-SHY

Price: Inquire

PHOTOS:





2006 LEARJET 60

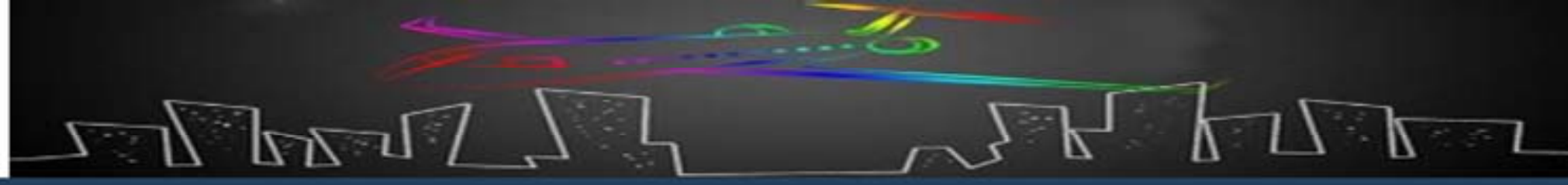
Serial Number: 305

Registration Number: TC-SHY

Price: Inquire

PHOTOS:





2006 LEARJET 60

Serial Number: 305

Registration Number: TC-SHY

Price: Inquire

PHOTOS:

